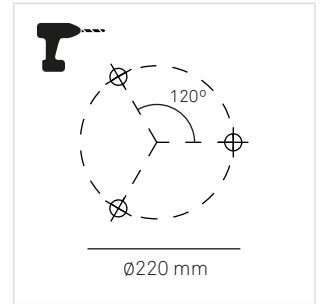
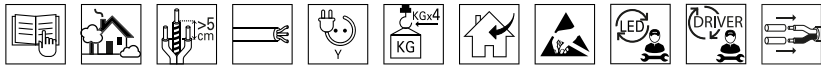




# VENETO

PENDANT MULTIPLE

# LedsC4



**CASAMBI**

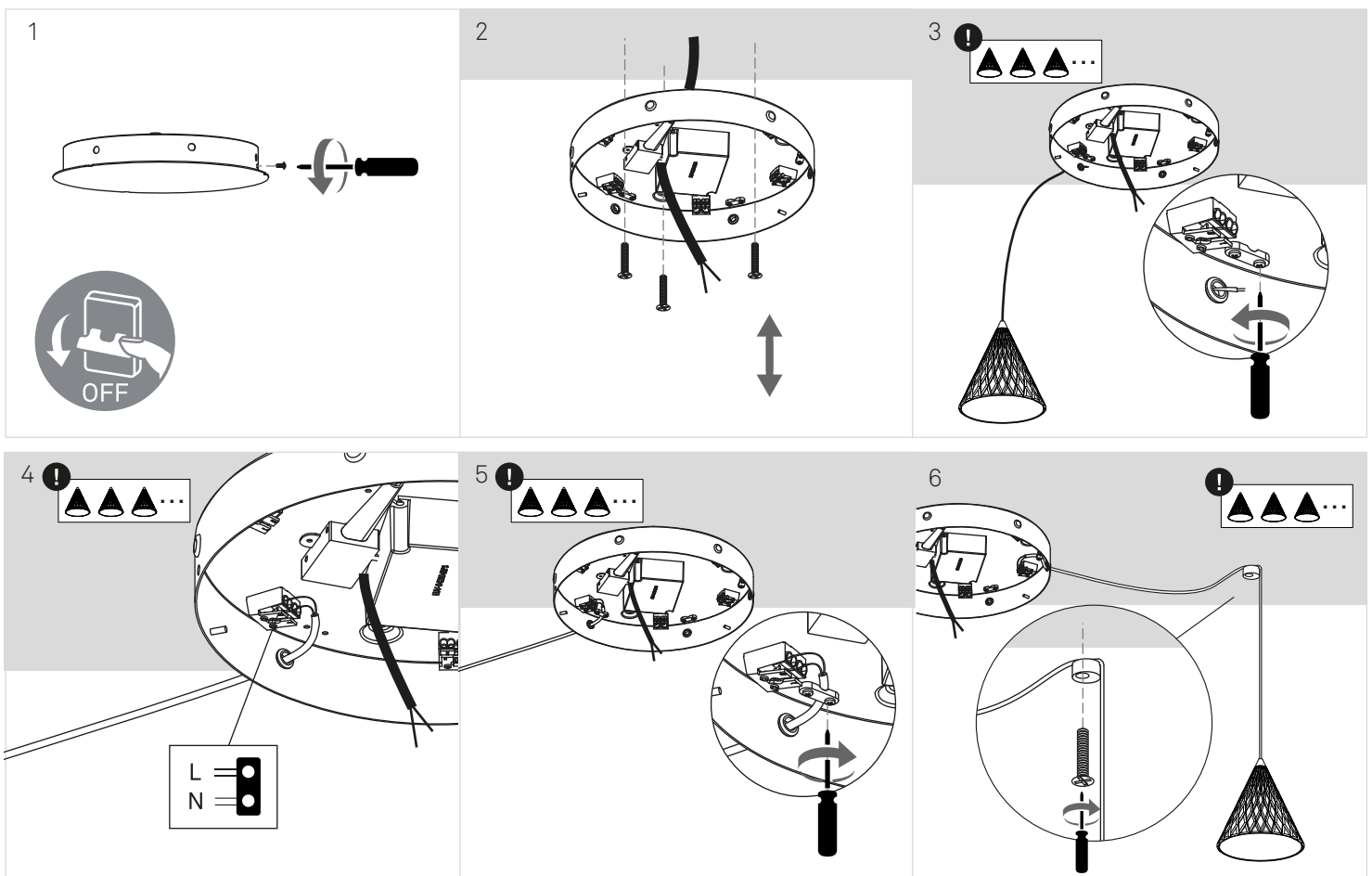
1. Turn ON Bluetooth.
2. Scan QR code at [casambi.com](http://casambi.com).
3. Turn ON the light fixture.
4. Confirm pairing on the smartphone.

**LightForLife**

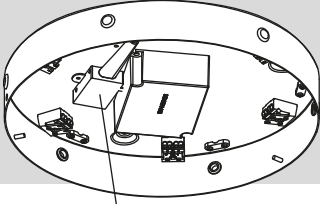
1. Turn ON 2.4 GHz Wi-Fi.
2. Scan QR code at [smartapp.tuya.com/lightforlifsmart](http://smartapp.tuya.com/lightforlifsmart).
3. Turn ON the light fixture.
4. Press the button for 5 seconds.
5. Confirm pairing on the smartphone.
6. Confirm pairing on the smartphone.

APP +

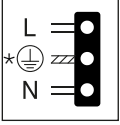
[leds-c4.com/sites/default/files/media/files/manual-lightforlife-en.pdf](http://leds-c4.com/sites/default/files/media/files/manual-lightforlife-en.pdf)



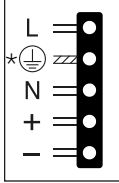
10



ON-OFF

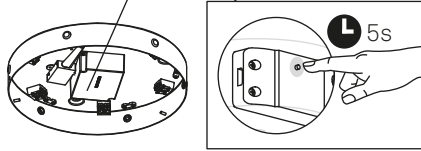


DALI / 0-10V

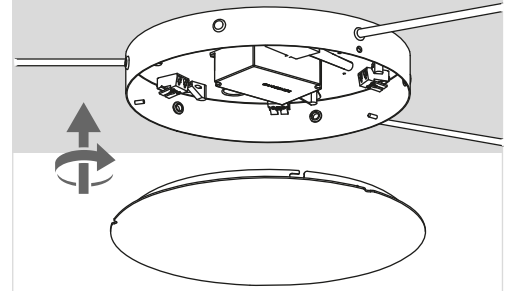


\*CHECK DRIVER SPECS

**i** LightForLife



11



12

