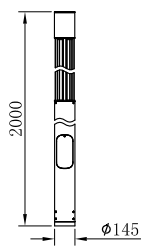


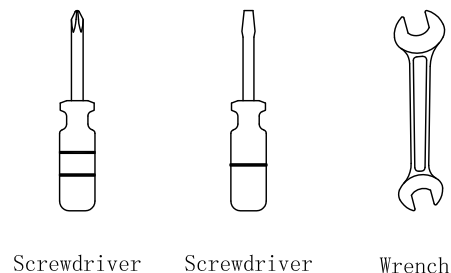
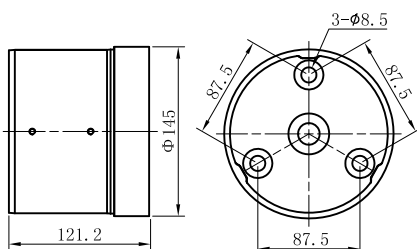
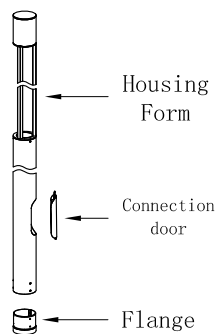
Mounting Instruction

Product Parameters



1. Model: 046102-200
2. Rated Voltage: AC 100-240V
3. Rated Power: LED 30W
4. IP Grade: IP54
5. Insulation protection level: Class I
6. Operating Temperature: $-30\sim+45^{\circ}\text{C}$

Components and Tools



Installation Steps

<p>A</p> <p>Recessed Box</p> <p><input type="checkbox"/> OFF</p>	<p>B</p> <p>Drain pipe (2-10*5)</p> <p>Concrete</p> <p>Dinas</p> <p>Sand</p> <p>Soil</p> <p>Wiring pipe</p> <p>IP65</p> <p><input type="checkbox"/> OFF</p>	<p>C</p> <p><input type="checkbox"/> OFF</p>	
<p>D</p> <p><input type="checkbox"/> OFF</p>	<p>E</p> <p><input type="checkbox"/> OFF</p>	<p>F</p> <p><input checked="" type="checkbox"/> ON</p> <p>✓</p>	<p>G</p>

Attention

1. Lamp should be installed by professional electrician;
2. The light source contained in this luminaire shall only be replaced by the manufacturer or his service agent or a similar qualified person;
3. Check the power switch has been turned off;
4. Please read this user guide carefully before installation and keep for future reference.