

19 Wall Recessed & Inground>The Inground Tiltable Range

69072/W



3W COB LED inground uplight with a 5° beam which is tiltable +/- 20°. IP67, stainless steel 316L and die cast aluminium body.

Supplied with non-dimmable LED driver and box for concrete installation.

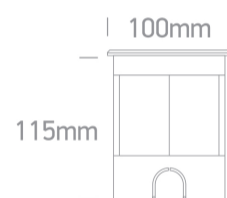
Complies with standard EN60598-1 and any other specific standards.



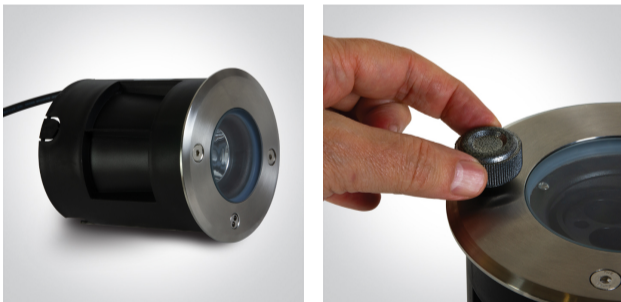
Downloads



Dimensions



Gallery





Physical Specification

Item Group	19 Wall Recessed & Inground
Family	The Inground Tiltable Range
Order Code	69072/W
Colour	Stainless Steel
Material	Die Cast
Shape	Circular
Height	115mm

Diameter	100mm
Cutout Hole Diameter	90mm
Inground	Yes
Depth Required	135mm+300mm drainage
Indoor	Yes
Outdoor	Yes
Adjustable	1 Direction
IK Rating	10

Electrical Characteristics

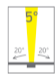
Gear	Built In
Fitting + Driver	
Input Voltage	220-240V
50 Hz	Yes
60 Hz	Yes
Safety Class	
Power(Watts)	3W
IP Rating	IP67
Light Source	LED built in
Dimmable	No
Cable Length	200cm
F Mark	

Fitting	
Input Type	Constant Current
Light Source	LED built in
LED Type	COB
LED Brand	Cree

Gear	
------	--

Gear Type	Led Driver
Input Voltage	220-240V
50 Hz	Yes
60 Hz	Yes
Power Factor	0,4
Constant Current	Yes
Dimmable	No
Housing Material	Plastic
Output Terminal	Connector

Illumination Data

Colour Temperature	3000K
Lumen Output	210lm
Light Efficiency	70lm/W
CRI	80
Beam Angle	5°
Illumination Diagram	

Packing Info

Pcs/Carton	20
Barcode	5291889079620
HS Code	9405413990

Certification & Warranty

Warranty

2 years

Weee Directive

Yes

switch to
one light!

one
LIGHT

