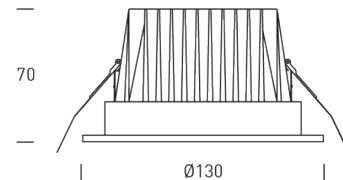


ROMANIA 20



SPECIFICATIONS

Version	ROMANIA 20
Input voltage	100-240V
Control	ON-OFF, PUSH & DALI
LED type	LED COB
Power (W)	20
mA	500
Driver	Not included
Color temperature	4000K
Real lumens (lm)	1700
CRI	CRI >80
Beam angle	60°
Finishes	White
Measures (mm)	130x70
Cutout hole (mm)	110x90
Weight (Kg)	0.58
Body	Aluminium
Diffuser	Glass Clear
IP	IP65
Temperature range	-10°C +40°C
Warranty	3-years



ACCESSORIES



Driver ON-OFF 150-500mA 6,3-21W 240V
Ref. 4.1069.1101



Driver ON-OFF EU 500mA 2,5-22W 200-240V
Ref. 4.3062.1101



Driver DALI & PUSH EU 300-1050mA 3-38W 220-240V
Ref. 4.3069.6101



Driver DALI & PUSH 150-700mA 7-29W 220-240V
Ref. 4.1069.6101

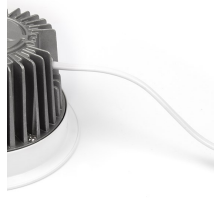
DETAILS TEXT DESCRIPTION



Quick connector



IP65 cable gland



0,5m lenght cable



IP20 Driver included