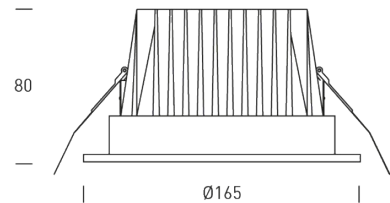


ROMANIA 30



SPECIFICATIONS

Version	ROMANIA 30
Input voltage	100-240V
Control	ON-OFF, PUSH & DALI
LED type	LED COB
Power (W)	30
mA	700
Driver	Not included
Color temperature	3000K
Real lumens (lm)	2400
CRI	CRI >80
Beam angle	60°
Finishes	White
Measures (mm)	165x80
Cutout hole (mm)	150x100
Weight (Kg)	0.95
Body	Aluminium
Diffuser	Glass Clear
IP	IP65
Temperature range	-10°C +40°C
Warranty	3-years



ACCESSORIES



Driver DALI & PUSH
EU 300-1050mA 3-38W 220-240V
Ref. 4.3069.6101



Driver ON-OFF 700mA
14-30W 100-240V
Ref. 4.1013.1106



Driver ON-OFF EU
700mA 3,5-30W 200-240V
Ref. 4.3063.1101



Driver DALI & PUSH
150-700mA 7-29W
220-240V
Ref. 4.1069.6101

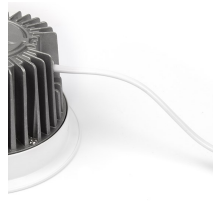
DETAILS TEXT DESCRIPTION



Quick connector



IP65 cable gland



0,5m lenght cable



IP20 Driver included