

INSTALLATION MANUAL

6316

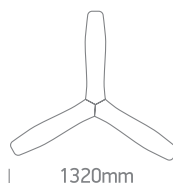


DC 30W **6**
MOTOR MOTOR SPEED



230V | DC MOTOR 30W | IP20 | Metal body | ABS blades | Rod mounted

- Maximum air flow rate 100m³/min
- Service value 2,8/W
- Standby power consumption 0,5W
- Fan sound power level 45dB(A)
- Maximum air velocity 2,6 m/sec.
- Max RPM 185



one
LIGHT

1

Install the fan blades and tighten screws.

2

2a

Install ceiling bracket.

3

Remove the R clip from the pin.
Then remove the pin from the rod.

4

A Place the parts on the rod. **B** Pass wires through rod.

5

A Put the rod into the motor and install the pin and R clip.
B Tighten all the nuts and screws.

6

Hang the fan onto the ceiling bracket.

7

Place the receiver on the hanger bracket.

8

Connect wires.

9

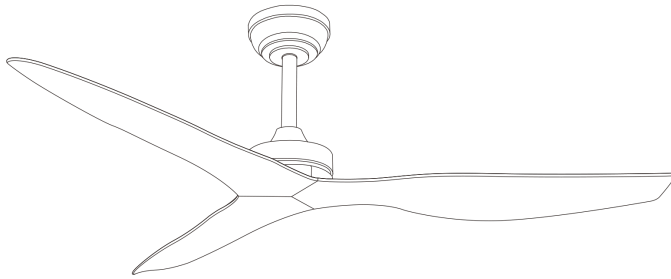
Warnings:

1. Make sure that the product is installed properly before connecting to electricity.
2. Maintenance and installation should only be carried out by a professional electrician.

INSTALLATION MANUAL

6316

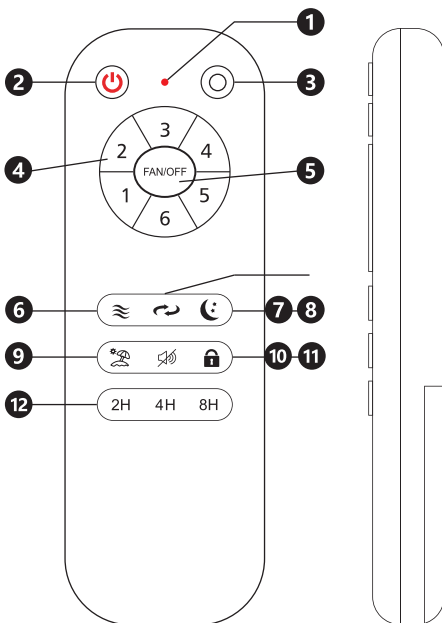
9



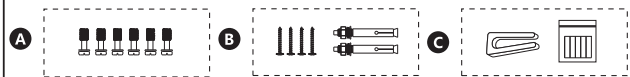
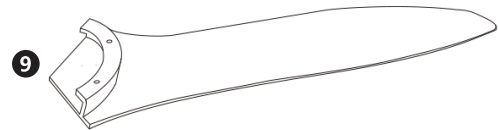
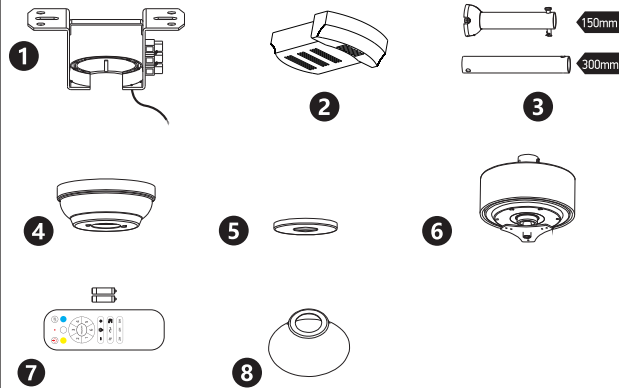
REMOTE CONTROL

Requires 2xAAA batteries. Remove batteries if not used for long period of time.

- ① LED indicator
- ② ON/OFF
- ③ Pairing
- ④ Fan speeds: To turn fan ON 1(lowest) to 6 (highest)
- ⑤ Fan OFF
- ⑥ Breeze: Fan speeds automatic cycle between 1 to 6
- ⑦ Reverse function for winter and summer
- ⑧ Sleep mode
- ⑨ Vacation mode: Switch on 5 minutes each 2 hours
- ⑩ Mute sound
- ⑪ Child lock
- ⑫ Timer: Fan stops after 2h/4h/8h



PACKAGE CONTENTS



- ① Hanger bracket
- ② Receiver
- ③ Rod assembly
- ④ Canopy
- ⑤ Canopy cover
- ⑥ Motor
- ⑦ Remote control + holder
+2 mounting screws
+1.5V (AAA)x2 batteries
- ⑧ Cover
- ⑨ Fan blades (3pcs)
- A Screws for blades
- B Mounting hardware
- C Blade balancing kit

Warnings:

- 1. Make sure that the product is installed properly before connecting to electricity.
- 2. Maintenance and installation should only be carried out by a professional electrician.